

# The Emergence of Intelligence-Powered Supply Chains

OPERATIONS & EFFICIENCY

STRATEGIC PROOF

Supply chains are no longer linear flows — they are evolving into intelligence-driven networks capable of sensing, predicting, and responding to disruption in real time. As global operations grow more complex, the demand for predictive and prescriptive capabilities has never been greater. Organizations that fail to adapt risk being outpaced by volatility they can no longer absorb.



# On the Radar

The fundamental nature of supply chain management is shifting. What was once a series of discrete, sequential handoffs is becoming a continuously connected, data-enriched ecosystem. Intelligence is being embedded at every node — from sourcing and manufacturing to distribution and last-mile delivery — transforming how organizations sense demand, allocate resources, and fulfill commitments.

This shift is not incremental. It represents a structural reimagining of how supply chains are designed, operated, and governed. The convergence of AI, real-time data, and advanced analytics is enabling a new class of supply chain that is adaptive, self-correcting, and strategically aligned with business outcomes.

## Increased Complexity

Global operations demand smarter coordination across more variables than ever before.

## Predictive Capabilities

Moving beyond reactive management to anticipate disruptions before they occur.

## Unified Integration

Planning, execution, and analytics converging into a single, coherent operating model.

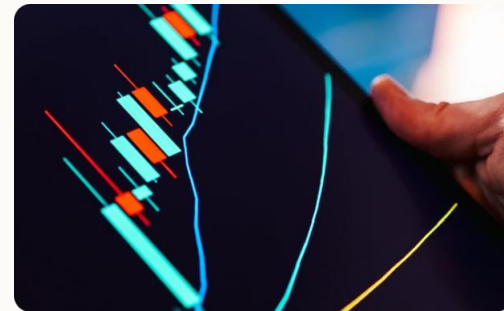
# What It Signals

Three converging forces are reshaping supply chain strategy and investment priorities across industries. Understanding these signals is essential for leaders who want to stay ahead of structural change rather than react to it.



## Increased Complexity Across Global Operations

Geopolitical shifts, multi-tier supplier networks, and rising customer expectations are compounding operational complexity. Organizations must manage more variables, across more geographies, with less margin for error.



## Demand for Predictive & Prescriptive Capabilities

Reactive supply chains are no longer sufficient. Leaders are investing in AI-driven tools that not only forecast what will happen, but recommend — and in some cases autonomously execute — the optimal response.



## Integration of Planning, Execution & Analytics

Siloed systems create blind spots and lag. The next-generation supply chain unifies planning, real-time execution, and performance analytics into a seamless, continuously learning operational fabric.

# Why It Matters Now

Traditional supply chains cannot respond fast enough to market volatility.

The pace of disruption — from geopolitical instability and climate events to demand shocks and supplier failures — has fundamentally outstripped the response capacity of conventional supply chain models. Organizations still operating on static plans, periodic reviews, and manual interventions are structurally disadvantaged in today's environment.

Intelligence-powered supply chains close this gap by compressing the time between sensing a disruption and orchestrating a response. The result is not just operational resilience — it is a durable competitive advantage that compounds over time as systems learn, adapt, and improve with every cycle.

## Market Volatility is Accelerating

Disruptions are arriving faster and with less warning, making static planning models obsolete.

## Speed of Response is a Differentiator

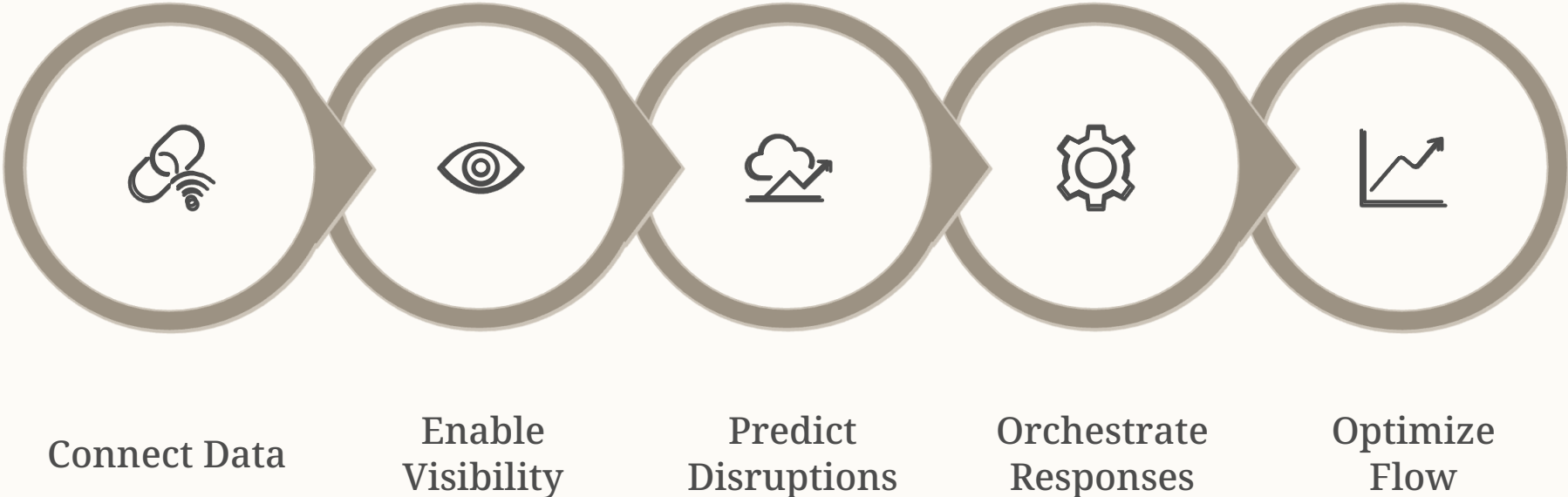
Organizations that can sense and act in near-real time will outperform those still operating on lagged data and manual processes.

## Resilience Drives Long-Term Value

Intelligence-powered supply chains don't just survive disruption — they convert it into a source of strategic advantage.

# Strategic Lens: The Intelligence Value Chain

Transforming a supply chain into an intelligence-powered network requires a deliberate, sequenced approach. Each stage builds on the last — creating a compounding capability that grows more powerful as data, visibility, and decision-making become fully integrated across the enterprise.



This five-stage framework — Connect Data, Enable Visibility, Predict Disruptions, Orchestrate Responses, and Optimize Flow — represents the strategic roadmap for supply chain intelligence. Organizations that advance through each stage systematically build the foundation for a truly adaptive, self-optimizing supply chain capable of thriving in any market condition.

**Fortis & Peak**  
Strategic advisory at the intersection of operations, technology, and competitive advantage.  
[www.fortisandpeak.com](http://www.fortisandpeak.com)

**Get in Touch**  
Ready to explore how intelligence-powered supply chains can transform your operations?  
[info@fortisandpeak.com](mailto:info@fortisandpeak.com)

